

Belleville Table

Ronan & Erwan Bouroullec, 2015

vitra.



Belleville Table

The Belleville Tables are modelled on the typology of the classic bistro table, but thanks to the selection of solid wood, veneer, melamine or HPL table tops, their appearance is highly variable. The slender legs flow in a continuous sweeping line from the splayed bottom along the central column to the table top. In star-shaped or paired configurations, they form bases for small and large bistro tables or dining tables.

The colour and surface texture of the cast aluminium table legs, which have a black powder-coated finish, are nearly indistinguishable from the plastic frame of the perfectly matched Belleville Chair. And since the materials of the table tops and seat shells are either identical or harmoniously coordinated, the tables and chairs form a unified yet diverse group - a hybrid family of furnishings whose materiality resists classification. Thus the tables can be ideally combined with Belleville Chairs in bustling bistro settings as well as in sleekly modern galleries or diversely styled home environments.

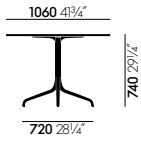
The Belleville Table is available as a small square or round bistro table with a star-shaped base or as a bistro and

dining table in different widths and lengths with slightly arched T-legs. Depending on the model, the table tops come in solid wood, wood veneer, melamine or solid core material.

Materials

- **Table top:** solid wood with oiled finish, natural oak, smoked oak or American walnut (30 mm); oak veneer in natural or dark oak (20 mm); melamine faced in white with smooth straight plastic edge (19 mm); or solid core material with black edge (12 mm) in the colours white or black. Solid core table top in black with anti-fingerprint coating.
- **Base:** powder-coated with finely textured finish in deep black (RAL 9005).
- **Applications:** table with top in solid core material and powder-coated base is suited for outdoor use. The powder-coated bases are pre-galvanised.

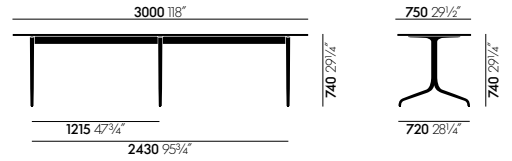
DIMENSIONS (in accordance with EN 1335-1)



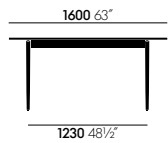
Square table, 750 x 750 mm



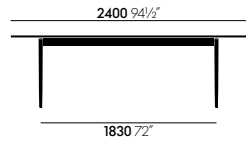
Round table, Ø 796 mm



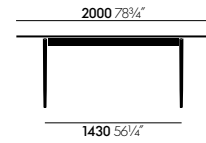
Rectangular table, 3000 x 750 mm



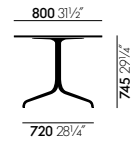
Rectangular table, 1600 x 750 mm



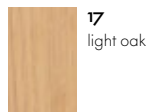
Rectangular table, 2400 x 800 mm



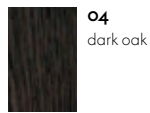
Rectangular table, 2000 x 800 mm



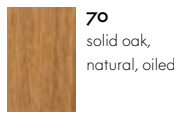
Surfaces and colours



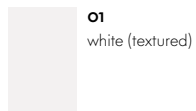
17
light oak



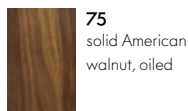
04
dark oak



70
solid oak,
natural, oiled



01
white (textured)



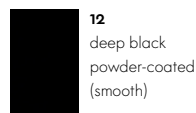
75
solid American
walnut, oiled



30
black (textured)



90
solid oak,
smoked, oiled



12
deep black
powder-coated
(smooth)

Table tops (Bistro)

Table tops (Dining)

Base



Belleville Table outdoor round and square

Design: Ronan & Erwan Bouroullec



SUSTAINABILITY

For Vitra, environmental, economic and social conduct begin with the individual. In order to develop, manufacture and market dependably long-lasting and environmentally sound products, Vitra complements this key factor of individual initiative with regular audits of the company's standards by independent review entities.

VITRA AND THE ENVIRONMENT

Vitra has manufactured furniture designs by Charles & Ray Eames and George Nelson since 1957. Building on this foundation over the years, the company has developed a wide range of furnishings for the office, for the home and for public spaces in collaboration with progressive designers.

Since 1997 Vitra has implemented a certified system for quality and environmental management according to the standards of **DIN EN ISO 9001** and **DIN EN ISO 14001**. Vitra is committed on all levels to reducing the use of

energy, raw materials and other resources – thereby reducing the environmental impact caused by emissions, waste water and waste materials. The most important contribution of Vitra to environmental sustainability, however, is the high quality and enduring design of its long-lasting products. The unusually long life cycle of Vitra products is ensured by aesthetics that do not follow temporary trends and fashions, and also by a careful selection of materials and the use of innovative technologies. The longevity of Vitra products is increased by the replaceability of wearing parts.

Trucks are to leave Vitra production sites preferably with a full load; the use of returnable packaging is being constantly increased. Preference is given to rail transport; overseas cargo is sent by ship and special transport is avoided. Vitra uses environmentally friendly materials for packaging and minimizes the volume of packaged products to make efficient use of the loading space in truck trailers and shipping containers.

Belleville Table outdoor round and square

Design: Ronan & Erwan Bouroullec

MATERIALS

Aluminium is light and durable. Die-cast aluminium components by Vitra are principally made out of remelted alloys which are largely recycled material. When remelting recycled aluminium there is an energy saving of 94% compared to the production of primary aluminium. Aluminium components are 100% recyclable.

Steel is a stable compound of iron and carbon with various added alloys. As the technical properties such as strength and elasticity can be adjusted according to the steel grade, the material can be used flexibly in many different forms. At the end of the product life cycle, steel components can be melted down and completely recycled.

Zinc can be cast very well with the addition of alloying elements. Zinc can be recycled with little energy use.

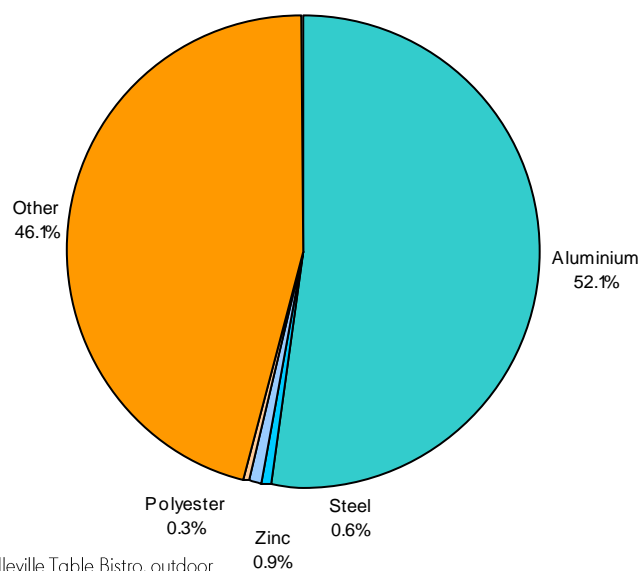
Polyester is used first and foremost for cover fabrics and non-woven fabrics at Vitra. All cover fabrics undergo strict quality control tests and satisfy the ecological criteria of the German Consumer Goods Ordinance. Polyester is a thermoplastic and can be remelted. However, cover fabrics are generally used thermally or as a material.

RECYCLING, PACKAGING AND REUSE OF PRODUCTS

Once a product reaches the end of its life cycle, it must be disposed of.

Recyclability:

Belleville Table is up to 54% recyclable when fully separated. Vitra understands the term recyclability to signify only melting down and reuse of raw materials. Polyurethane and wood products, for example, cannot be melted down. However, these materials can be used thermally to generate energy or can be crushed and recycled as materials.



Belleville Table Bistro, outdoor
Cover fabrics will be separated into synthetic materials and natural fibres, depending on the material.

Proportion of recycled material:

Belleville Table contains up to 50% recycled material. Using recycled materials conserves valuable resources. With their proportion of recycled material, among other things, Vitra products can contribute to a good rating in certification programs for sustainable buildings (for example LEED). We will be happy to assist you should you require more information on this subject.

Certificates:

GREENGUARD GOLD Indoor Air Quality Certified

