

QLOCKTWO[®] LARGE

Instructions for use

www.qlocktwo.com

Enjoy time

QLOCKTWO®

Instructions for use

Carefully read all instructions before using QLOCKTWO LARGE for the first time. Please follow the instructions on safety, operation and connection at the end of the manual. You can also find this document online at www.qlocktwo.com/info.

The package contains

- QLOCKTWO LARGE incl. front cover
- Wall bracket
- Instructions for use
- Wall-mounting template
- 10 mounting screws (matching wall plugs for various conditions are available at specialist shops)
- Mains adapter with DC-connector for 18 V socket, power plug and strain relief and power supply cable (see p. 6)
- Mains adapter and junction box (for power supply via a direct power outlet from the wall)
- Strain relief tape for external power supply unit (see p. 6)
- Infrared remote control
- Microfibre cleaning cloth
- Cotton gloves

⚠ WARNING! Mounting the QLOCKTWO LARGE is a demanding task. It must be carried out by at least 2-3 people. The individual steps are described in detail in the chapter "Mounting" – All instructions in the mounting guide and instructions on safety, operation and connection must be followed. Read these carefully and familiarise yourself with the components. Plan the execution and follow the guide step by step.

Mounting

⚠ WARNING! Work on electrical systems and electrical equipment should only be carried out by qualified electricians. Prior to installation ensure the power supply is isolated.

B&F Manufacture GmbH & Co. KG is not liable for improper connection or incorrect mounting of the QLOCKTWO LARGE.

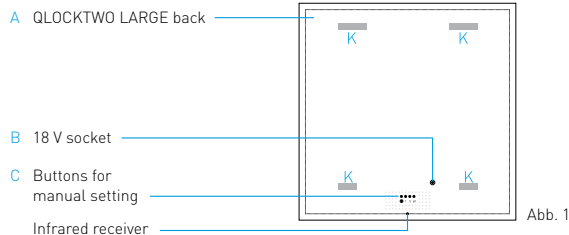
Required tools and materials

You need a secure platform for 2-3 people. Arrange for scaffolding or a working platform to be erected by qualified people. The height of the platform depends on the mounting height. Select a platform height ensuring people can safely hold and mount QLOCKTWO LARGE.

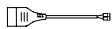
- Wall-mounting template
- Suitable screws and wall plugs depending on the construction of the wall (wall plugs are not included)
- Power drill with appropriate drill bit
- Cordless screwdriver or screwdriver
- Pocket rule
- Spirit level
- Tape or 4 drawing pins
- Pencil or centre punch

Please ensure that you have all the required parts and tools prior to mounting.

Descriptions



D Mains adapter



E Mains adapter with
F DC connector for 18 V socket and
G power supply cable (for 110 V to
230 V sockets)

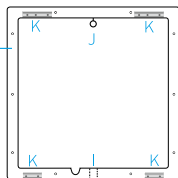


H Wall bracket

I Cable conduit

J Cable hook (only to be used
with strain relief M)

K Mounting rail



L Junction box



M Strain relief
(Velcro)



Step by step setup

⚠ WARNING! The weight of QLOCKTWO LARGE is approx. 20 kg with a size of 900 x 900 x 35 mm. Depending on the height, scaffolding or a lifting platform may be required. Please follow the instructions on safety.

⚠ WARNING! Please ensure that the load-bearing capacity of the intended wall is sufficient for the weight of the QLOCKTWO LARGE.

⚠ WARNING! Selecting the right wall plug is vital in order to securely mount to the wall. The type of wall plug depends on the construction of the wall. Make sure the load-bearing capacity of the intended wall and wall plugs is sufficient for the 20 kg weight of the QLOCKTWO LARGE.

1. Finding the right position

To determine the position of QLOCKTWO LARGE on the wall please use the enclosed template. Make sure there are no pipes or other supply lines near the marked drill holes. Mark the position of the wall bracket with the help of the template using a pencil or centre punch.

2. Drilling

Adjust the wall bracket with the spirit level and mark the drill holes through the wall bracket with a pencil or screw. Drill the mounting hole at the marked points. Insert the wall plugs, appropriate to the construction of the wall, into the drill holes.

3. Wall bracket

Mount the wall bracket with the 10 suitable screws, depending on the construction of the wall.

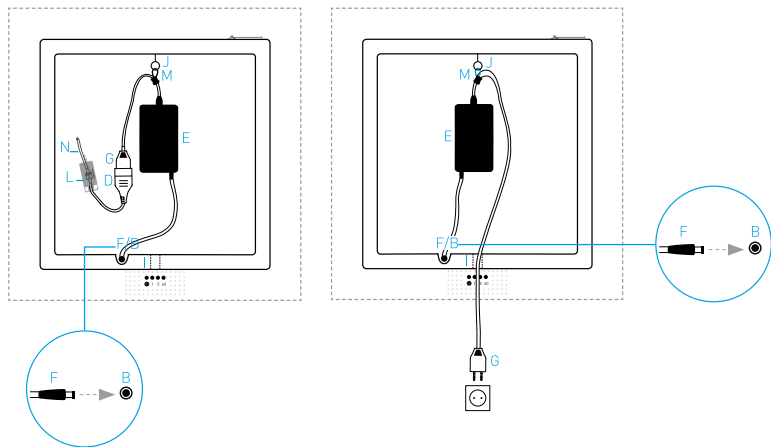
4. Electrical connection

Option 1: Power supply via a direct power outlet from the wall (see fig. 2).

Insert the power plug (G) into the mains adapter (D). **Only trained electricians should connect the mains adapter (D) to the power outlet in the wall (N) and fit the junction box (L).**

Option 2: Power supply via a plug socket (see fig. 3).

Hang the mains adapter (E) with the strain relief (M) on the cable hook. Insert the DC-connector (F) into the 18 V socket (B). Now, the QLOCKTWO LARGE can be hung on the wall bracket. Afterwards, the power supply cable (G) is inserted into a plug socket. The cable runs through the cable conduit (I) of the wall bracket. You might need an adapter to fit your country's type of sockets (see scope of delivery/labelling on the packaging). If you are uncertain, ask a qualified electrician for advice.



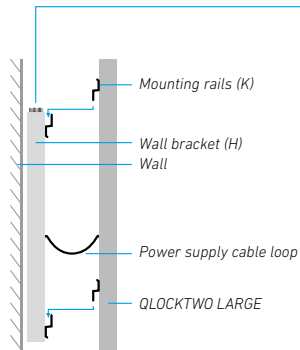
5. Mounting the QLOCKTWO LARGE

QLOCKTWO LARGE is ready to be hung onto the wall bracket. Before mounting the QLOCKTWO LARGE, hang the mains adapter (E) with the strain relief in the cable hook and insert the DC-connector (F) into the 18 V socket (B), see fig. 1, 2, 3.

Make sure there is no cable loop between the wall bracket and the body.

TIP

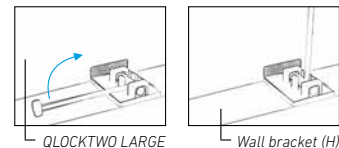
Bring QLOCKTWO LARGE towards the wall bracket evenly, about 1 cm higher than the final position. Press lightly against the wall bracket until the mounting rail engages. Now QLOCKTWO LARGE can slowly be lowered. Ensure that all four mounting rails are properly placed into the counter pieces.



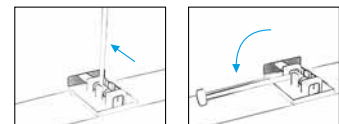
Securing

Stand in front of the QLOCKTWO LARGE. Reach above the QLOCKTWO to the upper side of the wall bracket (H) and secure the QLOCKTWO as follows:

1. Lift the lever upwards.



2. Move the lock pin into the designated slot thus securing the QLOCKTWO LARGE.



Functions and operation

Displaying/reading the time

Example: 7:18

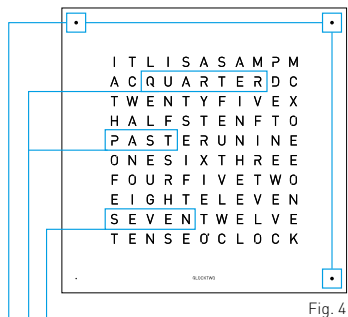


Fig. 4

- 60** Hourly display
Adjusting via button [60]
- 5** Text in 5-minute intervals
Adjusting via button [5]
- 1** Each illuminated dot =
1 minute later
Adjusting via button [1]

Operating the QLOCKTWO

The 4 buttons on the back can still be used while the clock is mounted to the wall.

Position of the buttons on the back.

Read from the front, in mounted position.

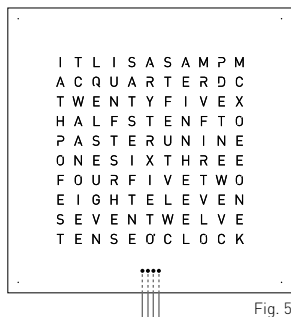


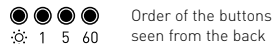
Fig. 5

- [60] button
Hourly steps
- [5] button
5-minute steps
- [5] button
Brightness
- [1] button
1-minute steps

Setting the time

QLOCKTWO LARGE operates using the built-in high-precision quartz chronometer. The time can be set manually using the buttons on the back of the QLOCKTWO LARGE.

The time is set manually using the buttons on the back of the QLOCKTWO LARGE (see fig. 1):

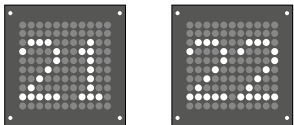


[1] = 1-minute steps [5] = 5-minute steps [60] = Hourly steps

By pressing the [1] button the internal seconds counter is set to zero.
This enables you to set the time accurately to the second.

Seconds mode

To select the seconds mode press the [:] button for longer than 3 seconds. The seconds will appear as large numbers in the matrix. By pressing any button QLOCKTWO LARGE resumes standard operation.



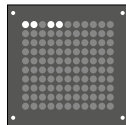
Setting the level of brightness

The LEDs' brightness automatically adjusts to the surrounding light. You can also manually set the level of brightness. By repeatedly pressing the [:] button you can change the level of brightness according to the following pattern:

- Maximum brightness
- Normal brightness
- Medium brightness
- Low brightness
- Automatic mode (the dots in the corners briefly light up)

Turning "IT IS" on/off

The introductory words "IT IS" can be turned on and off. To do so, press the [60] button for approx. 3 seconds. The words always appear when the mode is activated. In "purist mode" (factory setting) "IT IS" only appears every full and half hour.



Infrared remote control

All functions mentioned can also be controlled via the supplied infrared remote control. Simply point the remote upwards towards the bottom of the QLOCKTWO LARGE. The infrared receiver is positioned at the back of the QLOCKTWO LARGE.

Safety, operation and connection

⚠ WARNING! When connecting QLOCKTWO LARGE to a power outlet in the wall there is a danger of electric shock. Work on electrical systems and electrical equipment should only be carried out by qualified electricians. Prior to installation ensure the power supply is isolated and check for voltage.

⚠ WARNING! Consider the technical specifications appropriate for the connection to avoid the risk of causing a short circuit, fire or electric shock. QLOCKTWO LARGE should only be operated by connecting it to an appropriate mains socket. Installing it in a different manner is not permissible and can cause damage to the QLOCKTWO LARGE.

⚠ WARNING! Please use QLOCKTWO LARGE only with the original accessories it is supplied with.

⚠ WARNING! QLOCKTWO LARGE must only be installed and operated in dry, interior spaces. Do not install QLOCKTWO LARGE in locations with high levels of humidity, e.g. in the bathroom.

⚠ WARNING! Never touch the plug or the cable with wet hands due to risk of electrical shock.

⚠ WARNING! Ensure that QLOCKTWO LARGE is positioned and mounted securely to prevent injury and/or damage to surfaces or objects from a fall.

⚠ WARNING! QLOCKTWO LARGE should never be exposed to direct sunlight, very high or very low temperatures, moisture or strong vibration. The safe operating temperature ranges between 15 °C and 30 °C.

⚠ WARNING! This device is not intended to be used by persons (including children) with restricted physical, sensory or mental abilities or lacking experience and/or knowledge, unless they are supervised by a person responsible for their safety or have received instructions on how to use the device by that person. Children should be supervised to ensure they do not play with QLOCKTWO LARGE.

⚠ WARNING! Children can choke on the packaging film and small parts. Keep the packaging film, QLOCKTWO LARGE and all associated parts away from children.

⚠ WARNING! Make sure the load-bearing capacity of the intended wall is sufficient for the weight of the QLOCKTWO LARGE.

⚠ WARNING! Selecting the right wall plug is vital in order to securely mount to the wall. The type of wall plug required depends on the construction of the wall. Make sure the load-bearing capacity of the intended wall and wall plugs is sufficient for the 20 kg weight of the QLOCKTWO LARGE.

⚠ WARNING! QLOCKTWO LARGE contains strong magnets. They can disrupt the operation of electronic implants like cardiac pacemakers thereby putting people at risk. Do not keep QLOCKTWO LARGE in close proximity of the implants (minimum distance 30 cm). Due to their magnetic effect they can also pull your tools onto the front plate thus scratching or damaging your QLOCKTWO LARGE.

Repairs

Maintenance, adjustment and repair work should only be carried out by an expert or a specialist workshop. Never attempt to repair or dismantle the QLOCKTWO LARGE yourself. If your QLOCKTWO LARGE is damaged or not functioning properly, please contact a specialist dealer or the manufacturer directly.

⚠ WARNING! Never use a damaged QLOCKTWO LARGE!

Cleaning & care

Stainless steel front cover, brushed or coated

- During installation, make sure you wear the supplied cotton gloves!
- Please use a special stainless steel cleanser to clean the front cover made of brushed stainless steel.
- We recommend using only water to clean the front covers made of coated stainless steel.

⚠ WARNING! Do not use **any** cleaning agents containing solvents or alcohol like spirit!

GOLD/PLATINUM front cover

These surfaces should only be dusted with a dry, soft and dust-free cotton cloth or hair pencil and without applying any pressure.

RUST/RAW IRON front cover

These surfaces should only be dusted with a dry, soft and dust-free cotton cloth or hair pencil.

⚠ WARNING! Never use water, washing-up liquid and cleaning agents that contain solvents or alcohol like spirit!

Technical data

Dimensions

Body with front cover: 900 x 900 x 35 mm

Plug

Input: AC 100 V – 240 V – 50/60 Hz 2 A

Output: DC 18 V $\overline{\text{---}}$ 2.33 A

Power supply QLOCKTWO LARGE

Input: DC 18 V $\overline{\text{---}}$ 1.2 A



Warranty

The QLOCKTWO LARGE warranty period is two years. If damage is caused because the instructions in this manual were not followed, the warranty is void. Furthermore, the warranty will expire if the QLOCKTWO LARGE is altered, opened or modified. B&F Manufacture GmbH & Co. KG is not liable for any damage to property or personal injury caused by not observing the instructions for use, improper handling or incorrect placement or mounting of the QLOCKTWO LARGE.

Enjoy time

QLOCKTWO®

Dealer directory

BIEGERT & FUNK

B&F Manufacture GmbH & Co. KG
Alemannenstr. 65, DE-73529 Schwäbisch Gmünd
Made in Germany / © All rights reserved
www.qlocktwo.com

Technical data subject to modifications and errors. No liability is assumed for printing errors.