

MOUSQUETON PORTABLE LAMP

PRODUCT FACT SHEET



HAY

MOUSQUETON PORTABLE LAMP

DESIGN BY INGA SEMPÉ, 2023

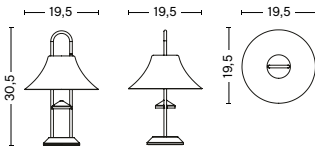
Named after the French word for carabiner, Inga Sempé's Mousqueton Portable Lamp is an outdoor LED lamp that presents a functional lighting solution with a familiar yet contemporary aesthetic. Featuring a multi-purpose hook at the top that creates multiple hanging possibilities, as well as a central hole detail, the lamp cleverly integrates technical features to amplify the functional and decorative qualities.

The coated steel shade and zinc alloy base ensure the lamp is robust and weather-proof, while the rechargeable battery makes it easy and convenient to move around for spontaneous placement. Available in different colour options, Mousqueton Portable Lamp brings ambience and originality to any indoor or outdoor setting.

HIGHLIGHTS

- Part of a progressive and technologically advanced lighting collection.
- A colourful, portable and robust LED-based lamp that can be used freestanding in a number of different environments and applications.
- CE and ETL approved for both EU and US markets.
- Integrated LED light source ensuring a life span of at least 25,000 hours of use.
- Integrated touch step dimmer switch with three standard settings inside of the shade.
- Minimum 10 hours of use before the battery requires recharging via USB-C.
- Qualified for contract use.
- IP44 outdoor rated.
- Suitable for both indoor and outdoor environments.

DIMENSIONS



DIAMETER Ø19,5 CM | 7.75"

HEIGHT 30,5 CM | 12"

MATERIALS

LAMP BASE

Die-cast zinc-alloy and stainless steel tubes.

LAMP SHADE

Spun steel.

CORD

PVC micro USB-C cable (100 cm).

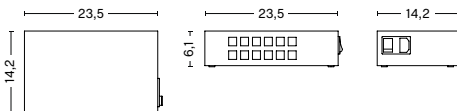
LAMP HOUSING

Injection moulded ABS.

OPTIONS

A USB charging station able to charge 24 Mousqueton Portable Lamps simultaneously.

Designed for settings where multiple Mousqueton Portable Lamps are used on a regular basis.



COLOUR & FINISH

Please note that the colour codes are indicative.



BRUSHED
STAINLESS
STEEL



OYSTER WHITE
STEEL
RAL 1013



IRON RED
STEEL
RAL 8015

TECHNICAL SPECIFICATIONS

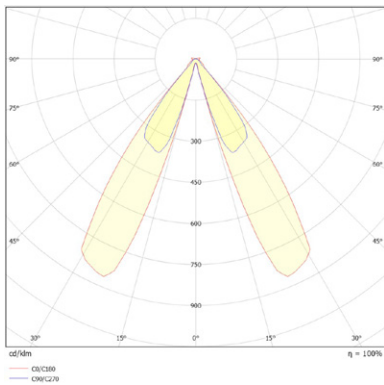
LIGHT SOURCE Integrated LED, 3W, 157lm, 2550K warm white	DIMMABLE Yes	POWER SUPPLY 220-240V AC at 50/60Hz	IP 44	SWITCH Touch step dimmer. (Integrated inside of the shade)
--	------------------------	---	-----------------	--

TEST SPECIFICATION OUTPUT*

FLUX (LUMENS) 157lm	CCT (KELVIN) 2550K, warm white	CRI (1-100) >80
-------------------------------	--	---------------------------

*Photometrics and the specification shown is taken using the integrated LED bulb fitted in the production luminaire.

PHOTOMETRICS



CERTIFICATES

CE APPROVED

This product has been assessed and complies with the essential requirements of the relevant European directives.



Tested according to the following European EN IEC standards which relate specifically to electrical lighting products including:

- EN 61547:2009 (EMC immunity)
- EN 61347-1:2015/A1:2021
- EN 61347-2-11:2001/A1:2019
- EN 61000-3-3:2013+A2:2021
- EN 60598-2-4:2018
- EN IEC 55015:2019+A11:2020
- EN IEC 60598-1:2021+A11:2022
- EN IEC 61000-3-2:2019+A1:2021
- EN IEC 62031:2020/A11:2021
- EN 62493:2015

COUNTRY OF ORIGIN

China

DOWNLOADS

Packshots and lifestyle photos, 2D / 3D files, care and maintenance, instructions, test certificates, product fact sheets, and product presentations are available in our Image Bank at hay.com.

[LINK TO DIGITAL LIBRARY](#)