

m o o o i[®]



Love Sofa

Have you ever fallen in love with a chair or on a sofa? Both experiences are possible, even probable while enjoying a romantic dinner for two in the Love chair or cuddling up with your sweetheart in one of the Love sofas by Marcel Wanders.

Designer	Marcel Wanders
Year of design	2013
Material	Moulded foam with metal frame for durable comfort.



upholstery categories

COF (Client Own Fabric)

Abbracci

Bouclé/Divina Composition (Kvadrat

divina 3: 191-black, 0224-brown,

791-blue, 542-orange)

Bouclé

Jacquards

Liscio

Divina 3 & Divina Melange

Summit Uni & Summit Melange

Trickle

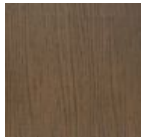
Twill & Twill Melange

Velour

Plush

COF (Client Own Fabric)

colours



Wood Stained
Cinnamon

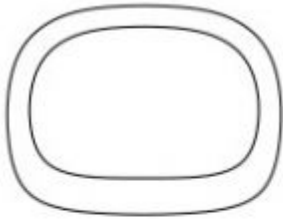


Wood Stained
White Washed

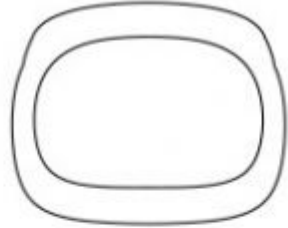
dimensions

m o o o i[®]

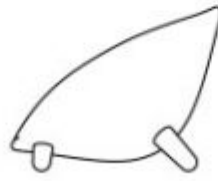
129cm | 50,8"



129cm | 50,8"



77cm | 30,3"



77cm | 30,3"

102cm | 40,2"



Abbracci

composition

100% pl

abrasion

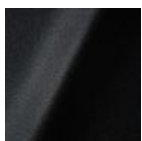
50.000 martindale

lightfastness 4

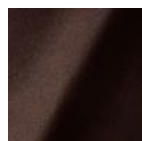
firetest

FR BS5852 0/1

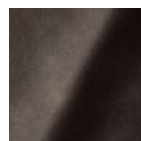
EN1021 I&2



Abbracci
Black



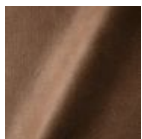
Abbracci
Brown



Abbracci
Grey



Abbracci
Oyster



Abbracci
Taupe

Jacquard andaz

composition:

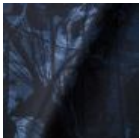
34% cotton - 30% viscose - 24% linen - 12% polyamide

abrasion:

25000 martindale

lightfastness 4-5**firetest:**

BS EN 1021 1&2



Jacquard
Andaz

Jaquard Fresco

composition

40% vi ,36% co,14% pl, 10% li

abrasion

20.000> martindale

lightfastness 4-5**firetest**

EN1021 1&2



Jaquard
Fresco

Jacquard Old Black & Blue

composition

52% vi, 38% co, 10% li

abrasion

20.000> martindale

lightfastness 4-5**firetest**

EN1021 1&2



Jacquard
Old Blue



Jacquard
Old Black

Justo

composition

15% CO, 35% PC, 10% PL, 40% VI

abrasion

50.000 Martindale rubs, EN ISO 12947

lightfastness

Note 5, EN ISO 105-B02

fire test

EN 1021-1/2

US. Cal. Bull. 117-2013

NFPA 260

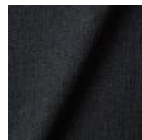
Upon request, with treatment:

BS5852 part1

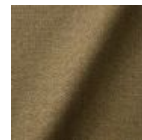
BS5852 crib5



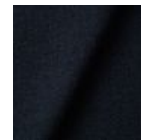
Justo
Alge



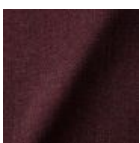
Justo
Bazalt



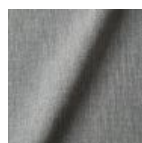
Justo
Bred



Justo
Flod



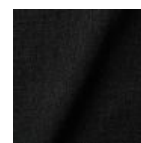
Justo
Hinde



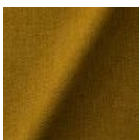
Justo
Lyse



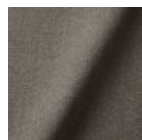
Justo
Muse



Justo
Nat



Justo
Sennep



Justo
Sten

Liscio

m o o o i[®]

composition

35% WO / 35% CV / 21% CO / 9% PA

abrasion

30.000 Martindale

lightfastness

4-6

firetest

US. Cal. Bull. 117-2013

Upon request, with treatment:

BS5852 part I



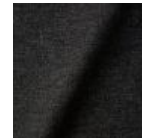
Liscio
**Grigio Blu
Scuro**



Liscio
Grigio Blu



Liscio
Grigio Scuro



Liscio
Muscio Scuro



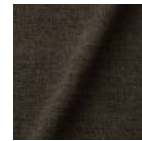
Liscio
Muscio



Liscio
Argento



Liscio
Nebbia



Liscio
Pietra



Liscio
Perla



Liscio
Latte Scuro



Liscio
Latte

Solis

composition

2% PA 3% PC 30% PL 65% WO

abrasion

40.000 Martindale rubs, EN ISO 12947

lightfastness

Note 5, EN ISO 105-B02

firetest

EN 1021-1/2

US. Cal. Bull. 117-2013

Upon request, with treatment:

BS5852 part I

BS5852 crib5

m o o o i[®]



Solis
Crust



Solis
Dawn



Solis
Fog



Solis
Gray



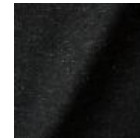
Solis
Paper



Solis
Rain



Solis
Spencer



Solis
Suit



Solis
Sunset

Summit Melange

composition

20% WO / 5% PA / 15% PES

60% PES filling

abrasion

50.000 martindale

lightfastness 6

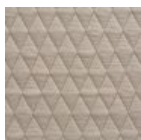
firetest

EN1021-1/2

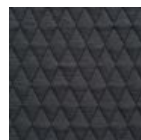
US. Cal. Bull. 117-2013

BS5852 part I

DIN 4102-B2



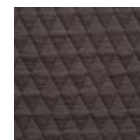
Summit Melange
Flour



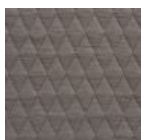
Summit Melange
Slate



Summit Melange
Dust



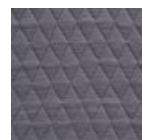
Summit Melange
Peat



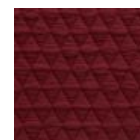
Summit Melange
Twig



Summit Melange
Lagoon



Summit Melange
Lavender



Summit Melange
Chili

Summit UNI

m o o o i[®]

composition

22% wo, 2% pa, 14% pl, 62% pl filling

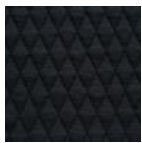
abrasion

50.000 martindale

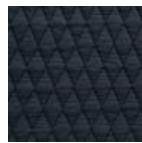
lightfastness 5

firetest

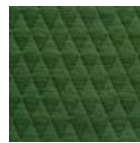
EN1021 I&2



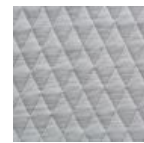
Summit UNI
Caviar



Summit UNI
Graphite



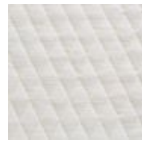
Summit UNI
Grass



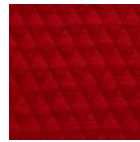
Summit UNI
Grey



Summit UNI
Linen



Summit UNI
Natural



Summit UNI
Passion



Summit UNI
Walnut

Trickle

composition

60% WO / 20% PES / 20% PA

abrasion

80.000 martindale

lightfastness 6

firetest

EN1021-I/2

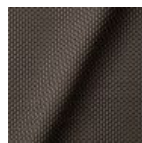
US. Cal. Bull. 117-2013

BS5852 part I

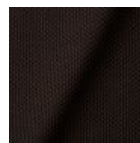
DIN 4102-B2



Trickle
Flour



Trickle
Twig



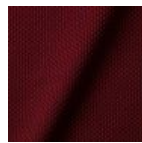
Trickle
Peat



Trickle
Dust



Trickle
Slate



Trickle
Chili



Trickle
Lavender



Trickle
Lagoon

Twill

m o o o i[®]

composition

72% wo, 8% pa, 20% pl

abrasion

75.000 martindale

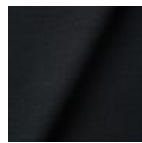
lightfastness 5

firetest

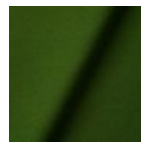
EN1021 I&2



Twill
Caviar



Twill
Graphite



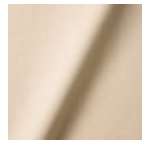
Twill
Grass



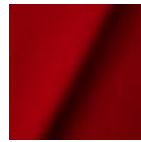
Twill
Grey



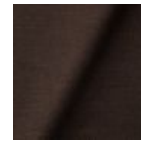
Twill
Linen



Twill
Natural



Twill
Passion



Twill
Walnut

Twill Melange

composition

60% WO / 20% PES / 20% PA

abrasion

80.000 martindale

lightfastness 6-7

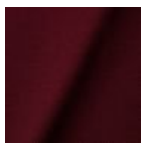
firetest

EN1021-1/2

US. Cal. Bull. 117-2013

BS5852 part1

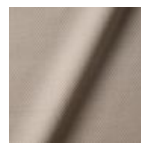
DIN 4102-B2



Twill Melange
Chili



Twill Melange
Dust



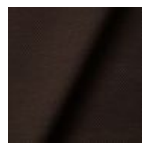
Twill Melange
Flour



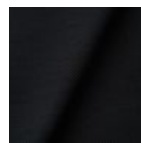
Twill Melange
Lagoon



Twill Melange
Lavender



Twill Melange
Peat



Twill Melange
Slate



Twill Melange
Twig

Velour

m o o o i[®]

composition

77% wo, 8% pa, 15% pl

abrasion

100.000 martindale

lightfastness 7

firetest

FR BS5852 0/1

EN1021 I&2



Velour
Coral



Velour
Stone



Velour
Moss

Vesper

composition

10% CO, 40% L, 10% PA, 10% PL, 30% VI

abrasion

40.000 Martindale rubs, EN ISO 12947

lightfastness

Note 5, EN ISO 105-B02

firetest

EN 1021-1/2

US. Cal. Bull. 117-2013

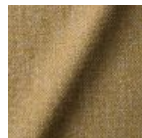
Upon request, with treatment:

BS5852 part I

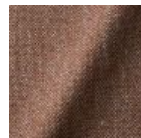
BS5852 crib5



Vesper
Aluminium



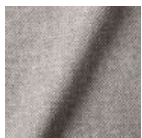
Vesper
Brass



Vesper
Bronze



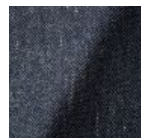
Vesper
Carbon



Vesper
Nickel



Vesper
Silver



Vesper
Steel



Vesper
Titan

Plush

composition

85% PC / 15% PL

abrasion

NA

lightfastness NA**firetest**

NA



white

Extinct Animal Collection - Dodo Pavone

composition

12% CO 88% PL

abrasion

40.000 Martindale rubs, EN ISO 12947

lightfastness

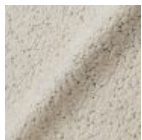
Note 5, EN ISO 105-B02

firetest

US. Cal. Bull. 117-2013

Upon request, with treatment:

BSS5852 part I



Kvadrat Fabrics

Kvadrat Fabrics

Selected Moooi products can be upholstered with a collection of Kvadrat fabrics. Kvadrat designs high-quality upholstery, in an extensive range of colours and textures.

Go to our Kvadrat fabrics page for a full overview of all fabric families you can choose from.

