

# Mikado

Edward Barber & Jay Osgerby, 2024













Room 2



# Mikado

Edward Barber & Jay Osgerby, 2024



Mikado is a chair with a serene yet commanding aura that aims to impress not only by its form but also through unparalleled comfort – whether used around home dining tables, in restaurants or for meeting rooms. The Mikado seating experience is defined by upholstery on all sides as well as the dynamic movement of the backrest. An ingeniously simple mechanism concealed beneath the seat allows the back to move with the sitter and recline at a slight angle for even greater comfort.

## Materials

- **Backrest and seat:** flexible backrest, back shell in recycled post-consumer polypropylene, seat and backrest upholstery in polyurethane foam.
- **Inner seat panel:** die-cast aluminium.
- **Seat height:** 505 mm (440 mm with applied load, measured in accordance with EN 1335-1:2000).
- **Four-legged base:** non-stackable, wooden base in natural oak or dark oak or aluminium base with powder-coated or polished finish; replacement by trained professionals only.
- **Five-star swivel base:** height-adjustable, aluminium with polished finish or powder-coated in basic dark; equipped with double castors (Ø 60 mm).
- **Four-star swivel base:** aluminium with polished finish or powder-coated in basic dark, on glides in accordance with EN 16139.
- **Seat substructure:** aluminium inner seat panel and aluminium support bridge for the pedestal base always powder-coated in basic dark.
- **Cover:** not glued, in fabric or leather with two seams along the sides of the backrest; replacement by trained professionals only.
- **Note:** none of the components are glued and they can all be separated according to material for recycling.
- **Origin of wood:** oak (*Quercus robur*) from the Czech Republic.



## Edward Barber & Jay Osgerby

Edward Barber and Jay Osgerby studied architecture as fellow students at the Royal College of Art in London. Since that time, their collaborative work has probed the interface between industrial design, furniture design and architecture.

1-9 Mikado  
10-11 Three bases  
12-13 Two seat shells

14-17 Modular components  
18-21 Environmental information  
22-43 Usage categories

44-56 Surface finishes and colours  
Cover fabrics  
57 Dimensions





## Three bases



### **Four-legged base:**

Non-stackable wooden base in natural oak or dark oak or aluminium base with powder-coated or polished finish; replacement by trained professionals only.



### **Four-star swivel base:**

Aluminium with polished finish or powder-coated finish; replacement by trained professionals only.



**Height-adjustable five-star swivel base:**

...r-coated in basic dark, on glides, replace-

Aluminium with polished finish or powder-coated in basic dark, equipped with double castors (Ø 60 mm), replacement by trained professionals only.

## Two seat shells

Mikado is available as an armchair with the suggestion of armrests or as a side chair, which each offer a distinctive seating experience.



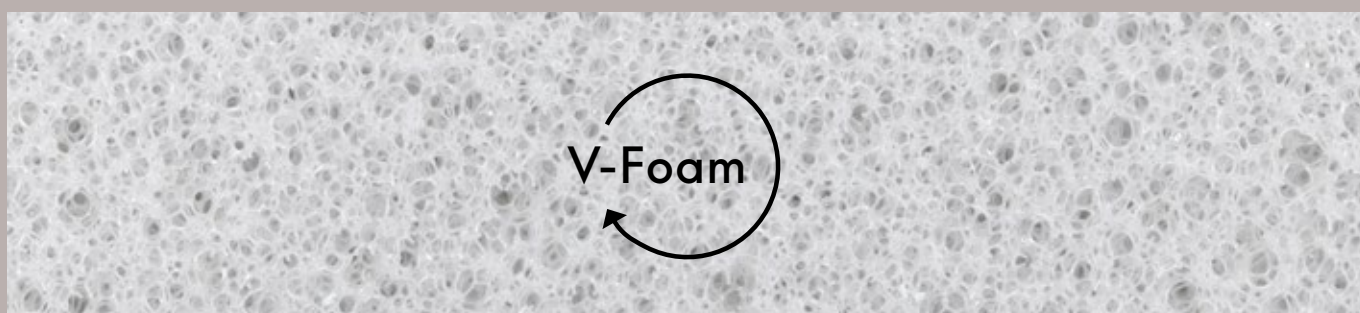
## Comfort through movement

The Mikado seating experience is defined by upholstery on all sides as well as the movement of the backrest. An ingeniously simple mechanism concealed beneath the seat allows the back to comfortably recline at a slight angle.





## V-Foam - meltable PU upholstery foam



Developed jointly by Vitra and BASF, V-Foam is the world's first economically recyclable polyurethane foam.

Standard polyurethane foam (PU foam) is derived from fossil fuels and utilised extensively worldwide. Its recycling process is very energy-intensive and uneconomical.

V-Foam, on the other hand, can be melted, reprocessed and returned to the material cycle in its entirety for use in new products. Vitra will gradually incorporate V-Foam for all its upholstered furniture containing moulded foam from 2025.

# Modular components for flexibility and sustainability

Mikado was designed with sustainability in mind from the outset: the covers are not glued and can be removed for cleaning or replacement. The legs may be replaced individually or exchanged for a different material option – wood or recycled aluminium.

## Backrest padding

V-Foam, recyclable polyurethane foam

## Seat cushion support

100% recycled polypropylene  
(made from waste packaging sourced from the German 'Yellow Bag' (Gelber Sack) programme)

## Seat support

Die-cast aluminium made of 95% recycled material

## Chair legs

Natural oak or dark oak; die-cast aluminium, powder-coated or polished finish, made of 95% recycled material

## Four-star base

Die-cast aluminium with powder-coated or polished finish made of 95% recycled material

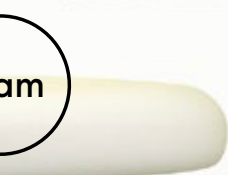


The inner seat panel is made of aluminium with a high recycled content, and the backrest shell is produced from recycled post-consumer polypropylene, which can be easily separated from the foam padding during recycling. The concept of a simple exchange of components gives Mikado long-term versatility, thereby ensuring longevity.



**Backrest shell**

100% recycled polypropylene  
(made from waste packaging sourced from the German 'Yellow Bag' (Gelber Sack) programme)



**Seat cushion**

V-Foam, recyclable polyurethane foam



**Seat support**

Die-cast aluminium made of 95% recycled material



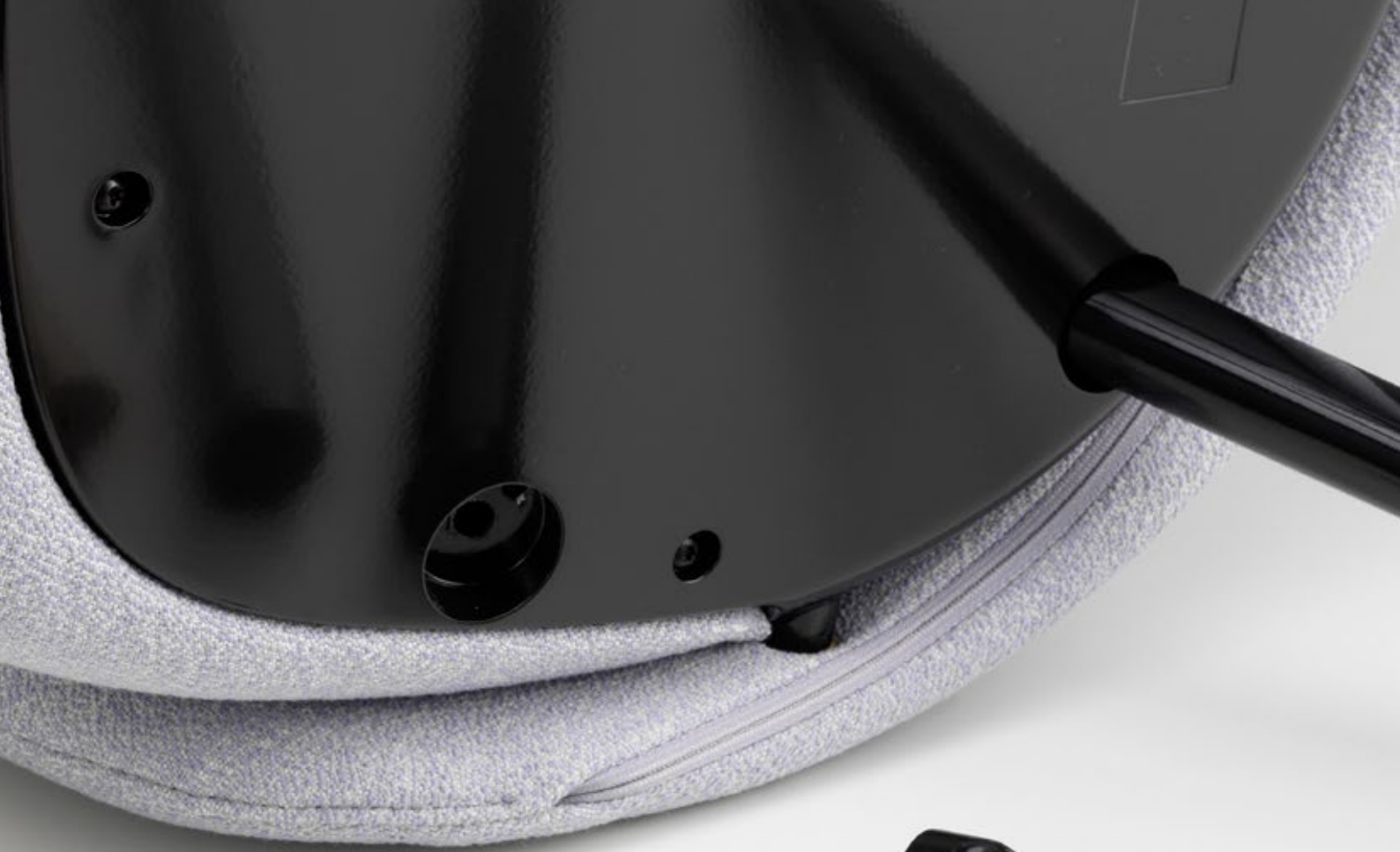
**Five-star base**

Die-cast aluminium, powder-coated or polished finish, made of 95% recycled material

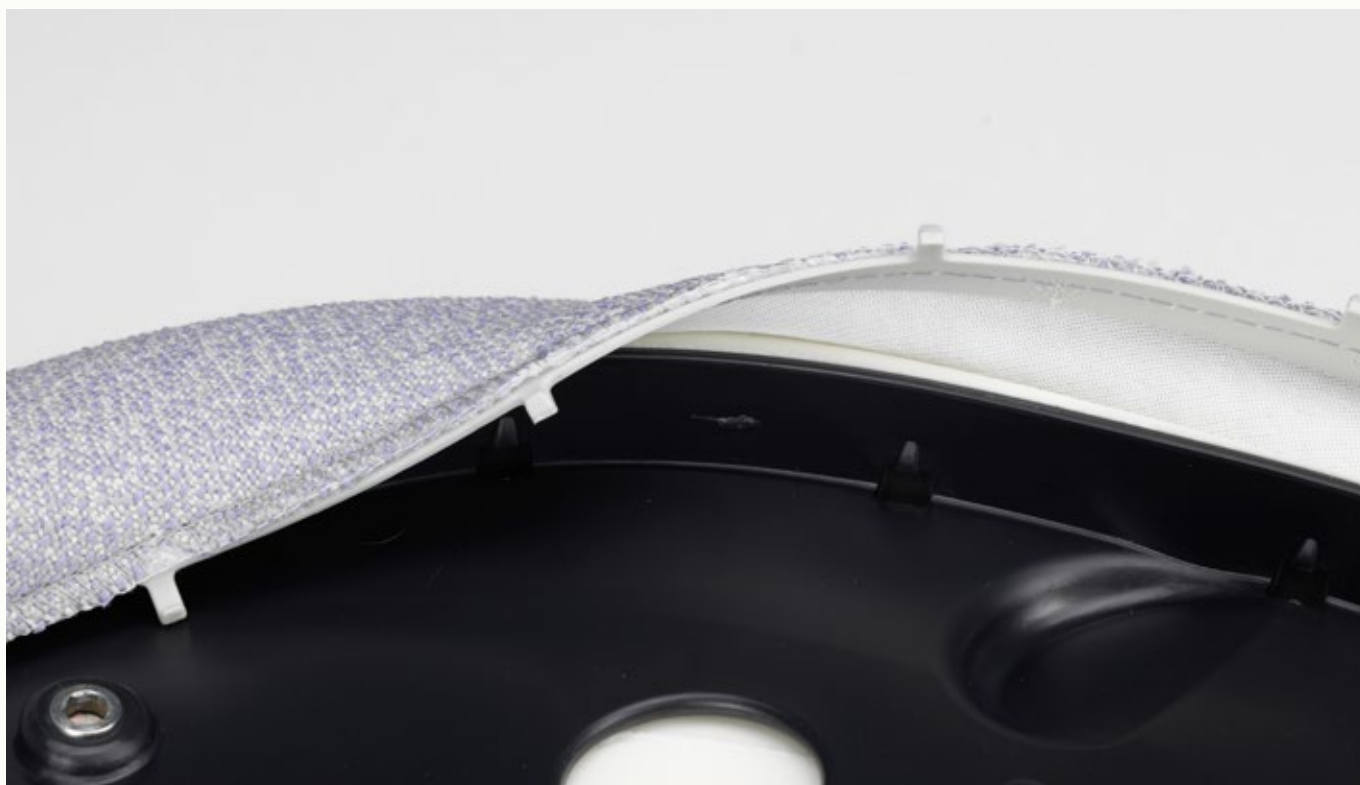


**Seat support**

Die-cast aluminium made of 95% recycled material







The covers are neither glued nor stapled and can be removed by service employees for cleaning or replacement.



# Ecology information



## Environmental Product Passport

The Environmental Product Passport contains information about the product carbon footprint, recycling, material composition, packaging & logistics, the supply chain and available product certificates. If you have any questions about the Environmental Product Passport or other queries about sustainability, please feel free to contact us at [sustainability@vitra.com](mailto:sustainability@vitra.com)

## Vitra Product Warranty

Designed and manufactured for longevity, Vitra products are backed by a quality promise guiding every aspect of their development and production. Registered products qualify for either a 10- or 30-year warranty, unlocking various benefits including product identification, origin tracing, and access to designer information and care instructions. This warranty reflects Vitra's commitment to sustainability.

Full terms and conditions and further information are available [here](#) for review. For USA & Canada, specific conditions apply.

Mikado is eligible for the 10-year Vitra Product Warranty when registered through <https://my.vitra.com> for private use.

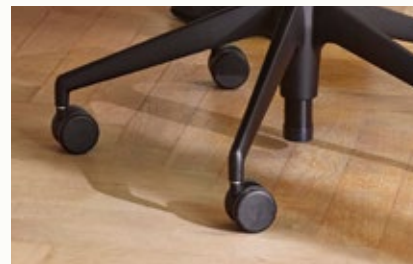
## Spare parts

Castors and glides can be ordered directly from the [vitra.com](https://www.vitra.com) website.

[Link to online shop](#)

For other spare parts, please contact Vitra or your local Vitra partner.

[Link to service contact form](#)

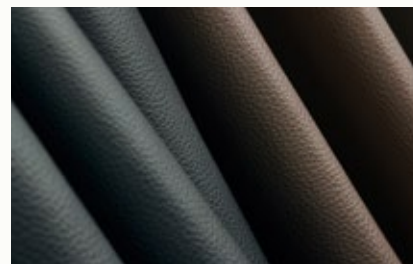


---

## Care instructions

Here you will find care instructions for cover fabrics, leather, plastics and metals.

[Link to website](#)



---

## Maintenance

For matters relating to maintenance and repair or general enquiries, contact our Service Team using the following form.

[Link to Service Team contact form](#)



---

## Find Vitra

Here you can find the nearest Vitra location or a Vitra partner for local assistance.

[Find Vitra](#)



# Sustainable quality



## Vitra Test Centre

All Vitra office chairs are subjected to rigorous testing, based on the parameters of 15 years of use, at the company's own Test Centre. Vitra carries out tests that go far beyond standard requirements, with an

inspection catalogue comprised of the world's toughest tests (simulation of worst-case usage).

Over the years, Vitra has developed additional tests of its own that are not found in any official catalogue of standards.



## Greenguard

The GREENGUARD label for indoor air quality (2001) recognises products that contribute to the creation of healthier indoor environments.



## GS

With the GS seal for tested safety, a state-authorised inspection institute certifies the suitability and safety of the construction and monitors production at regular intervals.



## Ergonomics Approved

The LGA certificate 'Ergonomics Approved' confirms the fulfilment of ergonomic requirements and testing criteria that exceed the minimum legal regulations for office swivel chairs.

## BIFMA

## Bifma

Mikado fulfils the ANSI/BIFMA standard X5.1-2011, thus meeting the stringent safety requirements for the US market.



## A chair for any setting

Mikado is available as an armchair with the suggestion of armrests or as a side chair, which each offer a distinctive seating experience and yet are so similar that they can be combined without disturbing the visual harmony around a table or within a given space. Different legs, two backrests, a choice of fabric or leather covers and numerous colours afford a wide variety of possible configurations.



Traditionally, Vitra has divided cover materials into two categories: the areas of application 'Home' and 'Office'. As these areas are changing, expanding and increasingly merging, the categorisation is now being adapted to further reflect real-life usage scenarios.

The new classification employs easily comprehensible terms and a point scale from 1 to 3. All existing and new cover materials from Vitra will be classified according to these new usage categories.

## Residential use

extremely cosy and natural, with limited resistance to wear



### Savana

Savana is a blended fabric woven from yarns of varying thickness, which give it an irregular texture with a lively and elegant appearance.

## Medium use

robust and durable, home-like and easy to maintain



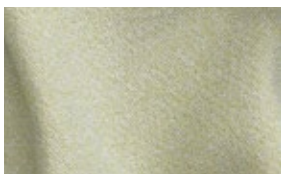
### Cento

Cento is made of 100% high-quality virgin wool with a three-dimensional structure and bouclé-like weave.



### Leather Premium F

Leather Premium F is a relatively smooth cowhide leather with a flat grain and fine top sheen. It is dyed-through and lightly pigmented.



### Dumet

Dumet is a plain-weave cotton blend with a lively texture in a range of melange tones.



### Nubia

Nubia is a blended fabric with a very lively, natural appearance and warm, home-like feel.



### Iroko 2

The piles in the chenille yarn give the weave a lively surface texture with an inviting, velvety touch.

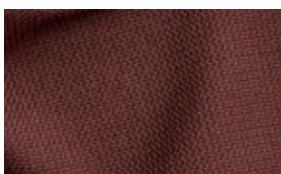


### Hola

Hola is a textile made from 100% recycled polyester with an understated expression and almost cotton-like feel.

## Heavy use

high technical values, very robust and durable



### Credo

Credo is a durable woollen fabric made of premium worsted yarn with a pleasant feel.



### Plano

Plano is a robust plain weave with a flat, even texture in a wide range of colours.



### Leather

The standard grade leather used by Vitra is a robust cowhide leather, dyed-through, pigmented and embossed with an even grain pattern.



### Volo

Volo is a finely structured wool blend with a refined weave that gives it an elegant appearance.



























Light-coloured, high-quality materials, such as marble, leather, cherry and oak wood, paired with warm ochre hues and cooler silver tones establish a fresh sleek environment. Natural textiles like Cento or bouclé fabrics such as Nubia and Savana blend in harmoniously.



Mikado Armchair  
**Nubia**  
10 salt'n pepper



Mikado Side Chair  
**Credo**  
12 rock



Mikado Armchair  
**Savana**  
01 pearl melange



Mikado Side Chair  
**Nubia**  
03 cream/sand



Mikado is particularly well-suited here in neutral, light upholstery colours such as cream or stone and with a base either in oak, chalk-coloured powder-coated aluminium or classic polished aluminium.



Mikado Armchair  
**Iroko**  
01 lemon



Mikado Side Chair  
**Savana**  
04 papyrus melange



Mikado Side Chair  
**Leather Premium F**  
62 ochre



Mikado Armchair  
**Plano**  
98 dark red/nero



Subtle combinations of neutral colours and light shades of red, orange, ice blue and grey, paired with materials such as birch or oak wood, ceramics, jute and cardboard as well as natural materials like Cento, create a relaxed, understated ambience.



Mikado Side Chair  
**Plano**  
12 light grey/ice blue



Mikado Armchair  
**Nubia**  
01 ivory/pearl



Mikado Armchair  
**Leather Premium F**  
63 cashew



Mikado Side Chair  
**Savana**  
04 papyrus melange



Mikado is an ideal choice here in light colours such as nude or orange and a pale-coloured base in oak or chalk-coloured powder-coated aluminium.



Mikado Armchair  
**Dumet**  
25 ochre melange



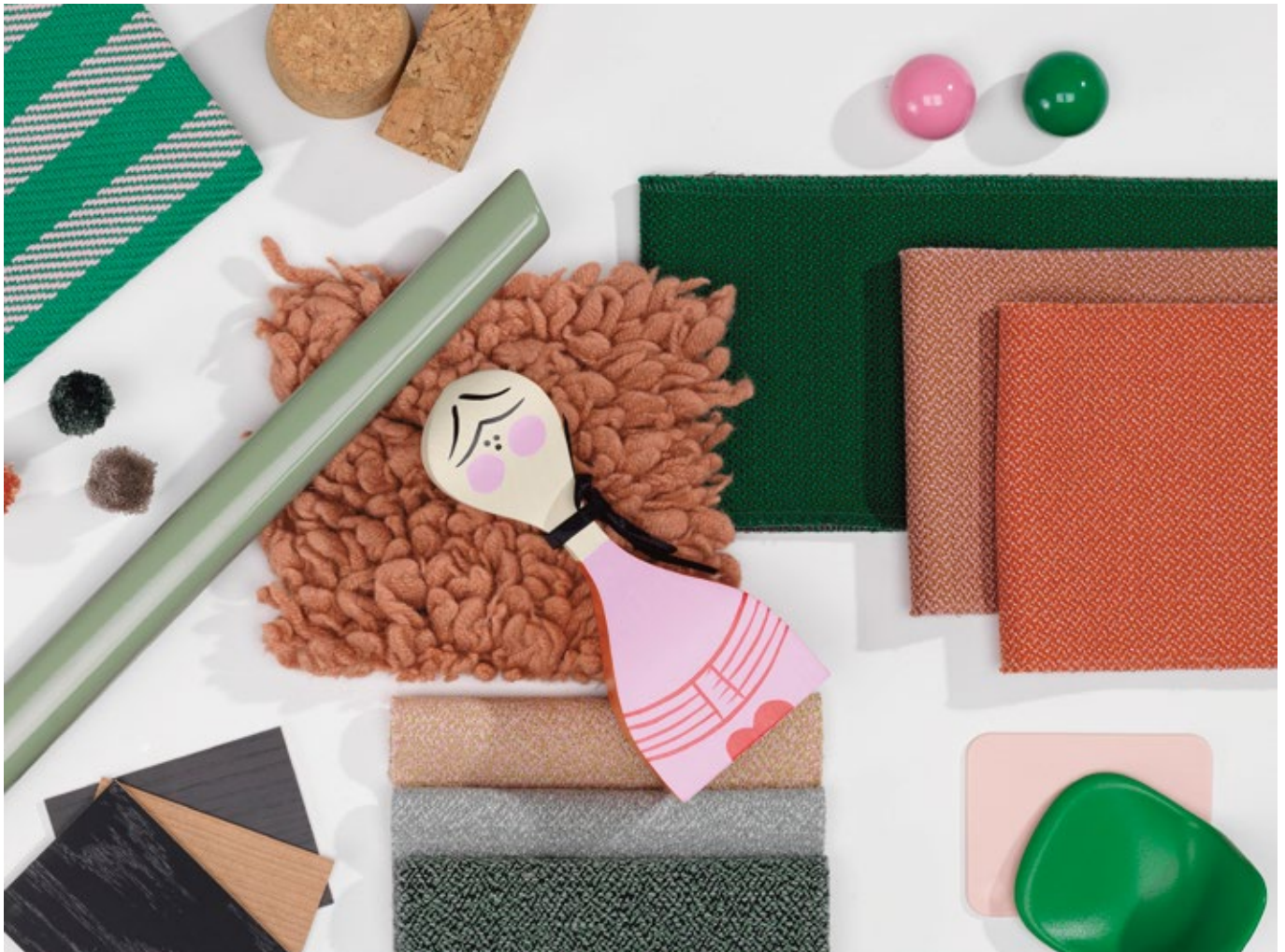
Mikado Side Chair  
**Nubia**  
03 cream/sand



Mikado Side Chair  
**Cento**  
05 orange



Mikado Armchair  
**Cento**  
12 dark red melange



Bold colours such as green or pink and black accents combined with materials such as recycled plastic, linoleum, metal, dark oak or ash wood and cork radiate youthfulness and confidence. Matching fabrics include Volo, Plano, Cento or Credo in vibrant colours.



Mikado Armchair  
**Nubia**  
03 cream/sand



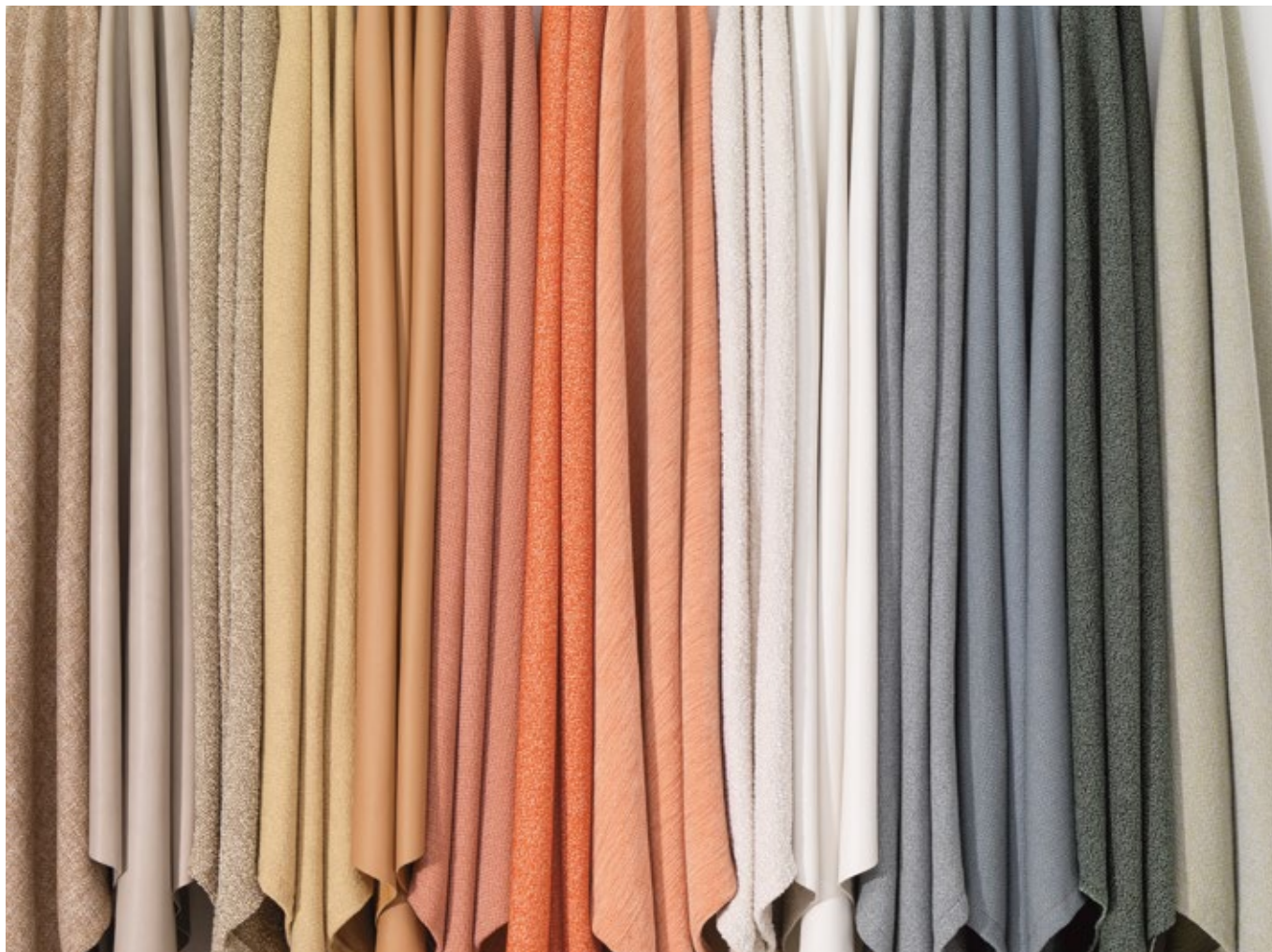
Mikado Armchair  
**Dumet**  
27 pale blue/emerald



Mikado Side Chair  
**Cento**  
09 malachite



Mikado Side Chair  
**Credo**  
22 emerald/ivy



Mikado cuts a particularly fine figure here in coloured covers, e.g. shades of green or pink, paired with light oak or aluminium legs.



Mikado Side Chair  
**Dumet**  
03 cream/sand



Mikado Armchair  
**Cento**  
02 pink/mustard



Mikado Side Chair  
**Iroko**  
16 salmon



Mikado Armchair  
**Plano**  
75 marron/nero



Walnut and rosewood, lustrous materials such as glass, velvet, silk and mirror surfaces as well as fabrics like Iroko, Dumet and Corsaro create a refined environment in combination with dark colours, ranging from burgundy to dark brown or jade and with a contrasting use of black and white.



Mikado Side Chair  
**Savana**  
03 mauve melange



Mikado Armchair  
**Cento**  
12 dark red melange



Mikado Side Chair  
**Cento**  
11 truffle/black



Mikado Armchair  
**Savana**  
08 graphite melange





Mikado is especially suitable in dark upholstery – dark brown, dark red or dark green tones – and a matching dark base made of oak or aluminium.



Mikado Side Chair  
**Nubia**  
10 salt'n pepper



Mikado Armchair  
**Volo**  
16 black



Mikado Armchair  
**Leather Premium F**  
59 jade



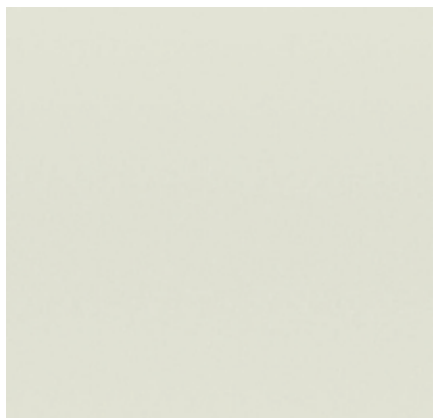
Mikado Side Chair  
**Cento**  
09 malachite



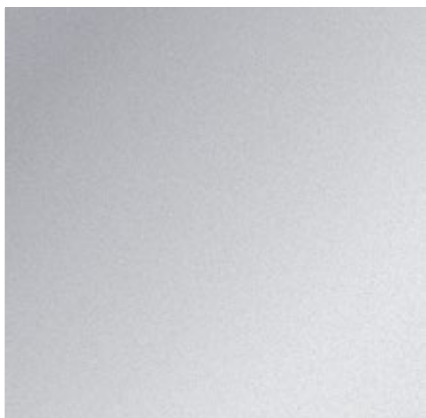


# Surfaces and colours

Four legged base in die-cast Aluminium

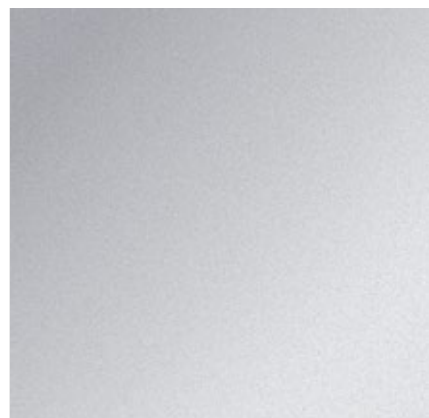


37  
chalk powder-coated (smooth)

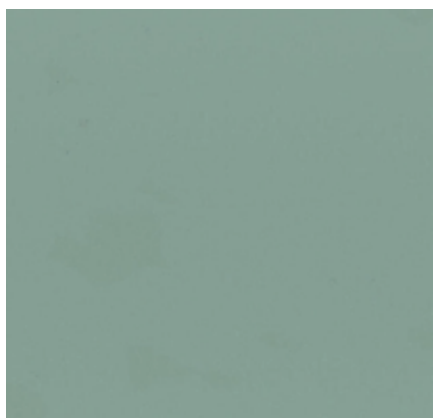


03  
polished aluminium

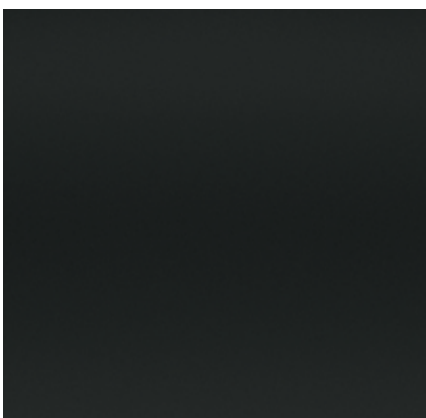
Four-star and five-star bases in die-cast aluminium



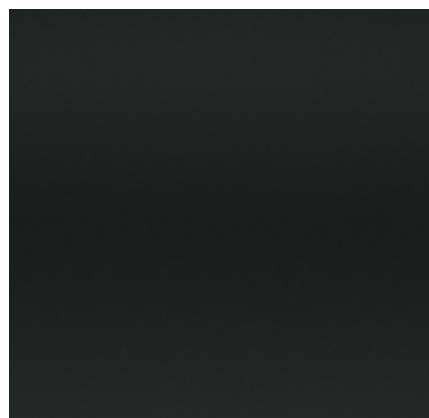
03  
polished aluminium



91  
mint powder-coated (smooth)



30  
basic dark powder-coated (smooth)



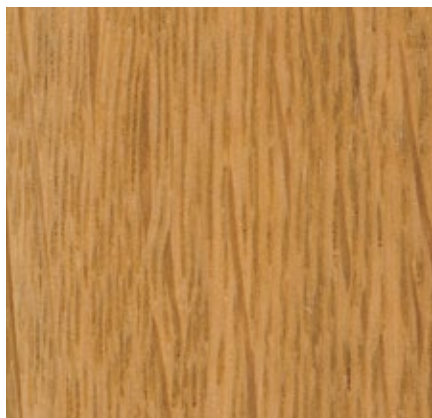
30  
basic dark powder-coated (smooth)

---

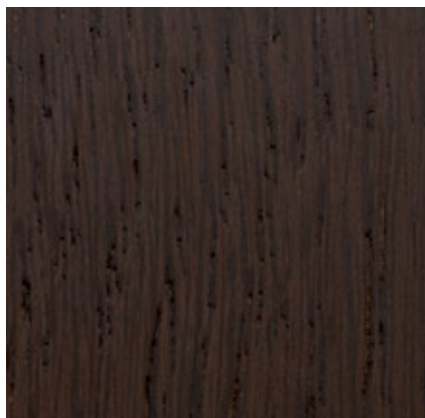
## Metal

Vitra most frequently uses aluminium and steel for metal components. Since 94% less energy is required to produce recycled aluminium in comparison to primary aluminium, Vitra utilises aluminium consisting of 95% recycled material whenever possible.

Depending on the product, metal surfaces are either powder-coated, chrome-plated, polished, galvanised or lacquered. A smooth or textured powder-coated finish provides colour and surface protection.

**Four legged base in wood**

**10**  
natural oak, with protective varnish



**04**  
dark stained solid oak, with protective varnish

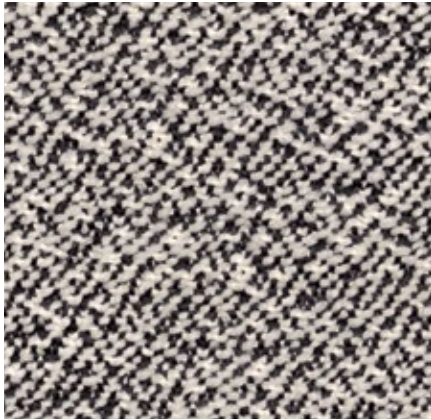
---

## Solid Wood

Wood is characterised by variations in grain, texture and colour, making each wooden furnishing a unique object. Vitra has strict quality standards for the woods selected for its products and uses wood from several trees for the manufacture of a single furniture object made of solid wood. As a result, every piece has a lively and distinctive appearance.

The solid woods used by Vitra are mainly sourced in Europe and have an oiled or lacquered finish, depending on their application. Exposure to light will alter the colour of wood over time.

# Cento Medium use, F120



Cento is made of 100% high-quality virgin wool. Its bouclé appearance and three-dimensional structure create a lively surface texture with a voluminous granular feel. Thanks to the sustainable purity of the wool, Cento has been granted the EU Ecolabel.

Cento is available in 14 colours.

Material	100% new wool
Weight	620 g/m <sup>2</sup> (18.3 oz/y <sup>2</sup> )
Width	147 cm +/- 2 cm (58")
Abrasion resistance	30,000 Martindale
Fastness to light	Type 5
Pilling	Grade 4-5
Fastness to rubbing	Grade 4 dry and wet

## Cento



# Credo Heavy use, F120



Credo is a durable woollen fabric made of premium worsted yarn with a pleasant feel. The two- and three-tone colours give this fabric a characteristic structure and vibrant appearance. Credo allows for an effective exchange of heat to ensure comfortable thermal conditions for the sitter. The fabric can also be used in office environments.

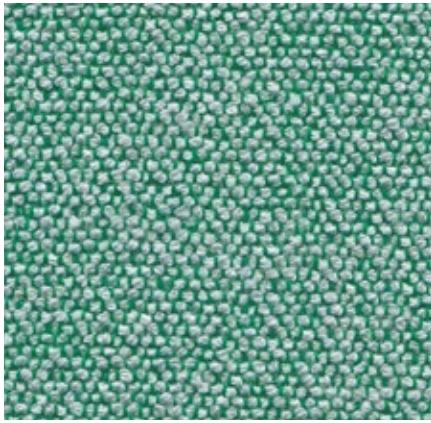
Credo is available in 22 colours.

Material	5% polyamide, 95% new wool
Weight	640 g/m <sup>2</sup> (18.9 oz/y <sup>2</sup> )
Width	145 cm +/- 2 cm (57")
Abrasion resistance	100,000 Martindale
Fastness to light	Type 6
Pilling	Grade 4-5
Fastness to rubbing	Grade 4-5 dry and wet

## Credo

 <b>01</b> cream	 <b>20</b> dolphin/steel blue	 <b>18</b> pale rose/ cognac
 <b>19</b> lime/curry	 <b>22</b> emerald/ivy	 <b>23</b> pale rose/dark orange
 <b>14</b> sand/avocado	 <b>21</b> royal blue/ elephant	 <b>15</b> saffron
 <b>11</b> cream/dolphin	 <b>26</b> teal blue/black	 <b>16</b> red chilli
 <b>13</b> salt'n pepper	 <b>08</b> dark blue/black	 <b>27</b> bitter chocolate
 <b>25</b> mother-of-pearl/ black	 <b>06</b> anthracite/ elephant	 <b>05</b> chocolate/black
 <b>12</b> rock	 <b>07</b> black/anthracite	 <b>24</b> mauve grey/ mid-grey
	 <b>17</b> black/aubergine	

# Dumet Medium use, F8o



Dumet is a cotton blend in a plain weave with a lively appearance. The natural mixed tones create an elegant look with an Italian flair. Dumet is soft and cool to the touch.

Dumet is available in 20 colours.

Material	9% polyamide, 8% linen, 22% wool, 46% cotton, 15% rayon
Weight	485 g/m <sup>2</sup> (14.3 oz/y <sup>2</sup> )
Width	147 cm +/- 2 cm (58")
Abrasion resistance	40,000 Martindale
Fastness to light	Type 5
Pilling	Grade 3-4
Fastness to rubbing	Grade 3-4 dry and wet

## Dumet





# Hola Medium use, F40

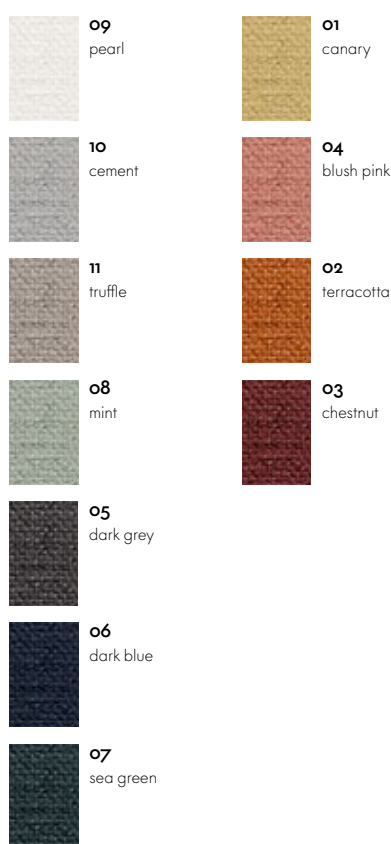


Hola is a textile made from 100% recycled polyester. Its finely textured threads are woven into a soft comfortable fabric with an understated expression and almost cotton-like feel. It is simultaneously also resilient enough to be used in semi-public spaces such as hotel lobbies. Hola is Oekotex-certified and manufactured using a dyeing process with a closed water cycle.

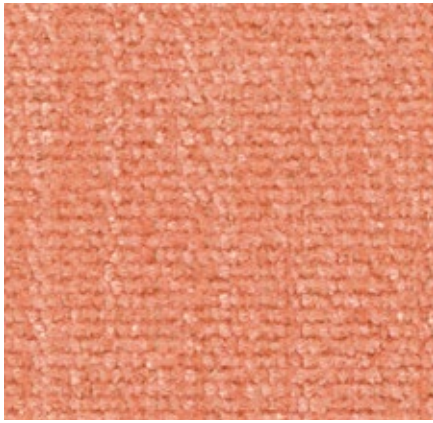
Hola is available in 11 colours.

Material	100% recycled polyester
Weight	470 g/m <sup>2</sup> (13.9 oz/y <sup>2</sup> )
Width	142 cm +/- 2 cm (56")
Abrasion resistance	60,000 Martindale
Fastness to light	Type 5
Pilling	Grade 4-5
Fastness to rubbing	Grade 4-5 dry and wet

## Hola



# Iroko 2 Medium use, F80



Iroko 2 is a soft, flat woven fabric made with chenille yarn. The piles in the yarn give the weave a lively surface texture with an inviting, velvety touch. The fabric's cotton fibres provide excellent cooling properties.

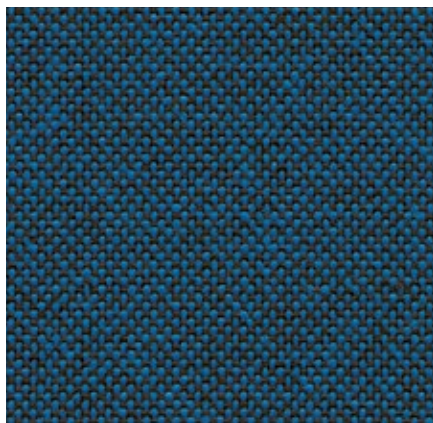
Iroko 2 is available in 17 colours.

Material	48% polyacrylics, 20% polyester, 32% cotton
Weight	700 g/m <sup>2</sup> (20.6 oz/y <sup>2</sup> )
Width	152 cm +/- 3 cm (60")
Abrasion resistance	40,000 Martindale
Fastness to light	Type 5
Pilling	Grade 3-4
Fastness to rubbing	Grade 3-4 dry and wet

## Iroko 2



# Plano Heavy use, F30



Plano is a robust plain weave with a flat, even texture. The wide palette of duotones with new, delicate washed-out shades includes many relatively neutral hues, a good number of which are coordinated with the Hopsak colour range. Thanks to its durability and longevity, Plano is also an ideal choice for office furnishings.

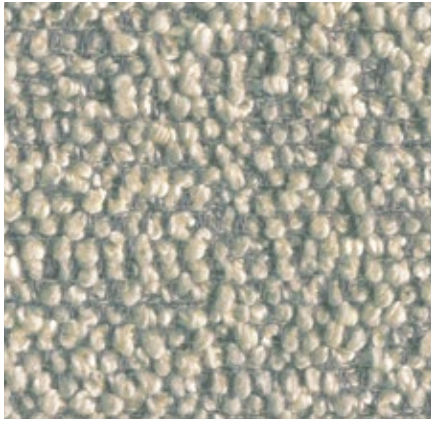
Plano is available in 39 colours.

Material	100% polyester
Weight	265 g/m <sup>2</sup> (7.8 oz/y <sup>2</sup> )
Width	142 cm +/- 2 cm (56")
Abrasion resistance	80,000 Martindale
Fastness to light	Type 6
Pilling	Grade 4-5
Fastness to rubbing	Grade 4-5 dry and wet

## Plano

 <b>05</b> cream white/ sierra grey	 <b>39</b> yellow/pastel green	 <b>87</b> nero/cream white	 <b>03</b> parchment/ cream white	 <b>15</b> pink/sierra grey
 <b>18</b> light grey/sierra grey	 <b>68</b> avocado	 <b>17</b> forest/sierra grey	 <b>20</b> tobacco/cream white	 <b>84</b> poppy red/ champagne
 <b>12</b> light grey/ice blue	 <b>34</b> grass green/ forest	 <b>40</b> coconut/forest	 <b>99</b> cognac/parch- ment	 <b>72</b> poppy red
 <b>13</b> nero/ice blue	 <b>61</b> classic green/ cognac	 <b>19</b> sierra grey	 <b>80</b> coffee	 <b>07</b> orange
 <b>81</b> blue/coconut	 <b>41</b> classic green/ forest	 <b>74</b> sierra grey/nero	 <b>97</b> red/coconut	 <b>63</b> red/poppy red
 <b>86</b> dark blue/brown	 <b>52</b> mint/forest	 <b>69</b> dark grey	 <b>67</b> cognac	 <b>96</b> red/cognac
 <b>43</b> petrol/nero		 <b>62</b> dark grey/nero	 <b>11</b> marron/cognac	 <b>16</b> dark red/ice blue
		 <b>54</b> brown	 <b>98</b> dark red/nero	
		 <b>73</b> nero/coconut	 <b>75</b> marron/nero	
		 <b>66</b> nero		

# Nubia Medium use, F100



Nubia is a blended fabric with a very lively, natural appearance. Its fine substructure is interspersed with voluminous bouclé yarn, which gives the fabric depth and a soft, inviting touch. The varying combinations of yarns yield either contrasting or calm colour compositions with a distinctly Mediterranean flair.

Nubia is available in 11 colours.

Material	2% polyamide, 30% new wool, 25% polyacrylics, 43% polyester
Weight	570 g/m <sup>2</sup> (16.8 oz/y <sup>2</sup> )
Width	140 cm (55")
Abrasion resistance	35,000 Martindale
Fastness to light	Type 5
Pilling	Grade 4
Fastness to rubbing	Grade 3-4 dry and wet

## Nubia



# Savana Residential use, F8o



Savana is a blended fabric woven from yarns of varying thickness, which give it an irregular texture with a lively and elegant appearance. A palette of subdued and natural earth tones, along with the dry, pleasant feel of the textile, emphasise the fabric's Italian flair.

Savana is available in 8 colours.

Material	8% polyamide, 50% polyacrylics, 23% linen, 19% cotton
Weight	820 g/m <sup>2</sup> (24.2 oz/y <sup>2</sup> )
Width	140 cm (55")
Abrasion resistance	30,000 Martindale
Fastness to light	Type 5
Pilling	Grade 3-4
Fastness to rubbing	Grade 3-4 dry and wet

## Savana



**01**  
pearl melange



**05**  
pebble melange



**02**  
sand melange



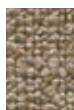
**06**  
sierra grey melange



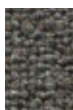
**03**  
mauve melange



**07**  
nutmeg melange

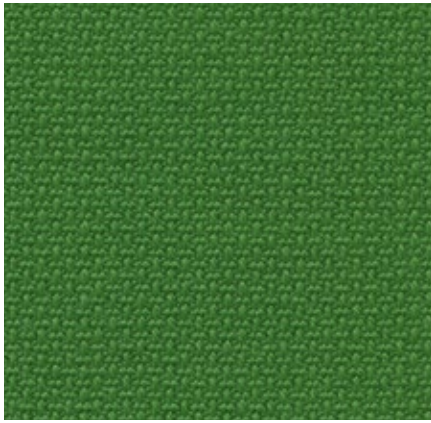


**04**  
papyrus melange



**08**  
graphite melange

# Volo Heavy use, F60

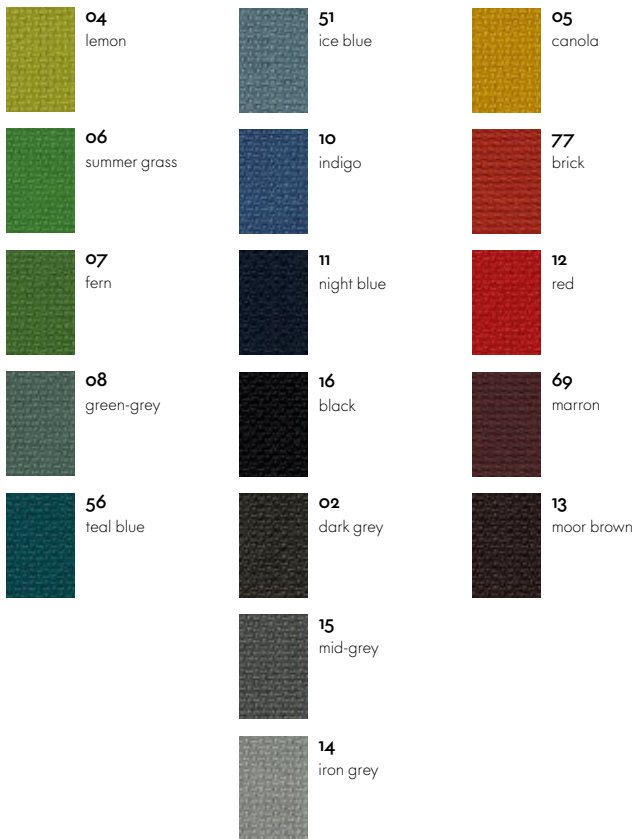


Volo is a finely structured wool blend with a refined weave that gives it an elegant appearance. This expressive textile shows strong solid colours to full advantage while simultaneously offering pleasant tactile qualities. With its soft look and appealing texture, Volo is a perfect fit for home interiors, but it is also well suited for use in the contract sector.

Volo is available in 17 colours.

Material	15% polyamide, 85% new wool
Weight	435 g/m <sup>2</sup> (12.8 oz/y <sup>2</sup> )
Width	145 cm +/- 3 cm (57")
Abrasion resistance	100,000 Martindale
Fastness to light	Type 6
Pilling	Grade 4-5
Fastness to rubbing	Grade 4-5 dry and wet

## Volo



# Leather Heavy use, L20



The standard grade leather used by Vitra is a robust cowhide leather, dyed-through, pigmented and embossed with an even grain pattern. Since it is hard-wearing and easy to maintain, it can also be used in office environments.

Leather is available in 16 colours.

Material	Robust cowhide with a distinctive, even grain
Fastness to light	Type 6
Thickness	1,1–1,3 mm
Fastness to rubbing	Grade 4 dry and wet

## Leather



# Leather Premium F Medium use, L50



Leather Premium F is a relatively smooth cowhide leather with a flat grain and fine top sheen. It is dyed-through, lightly pigmented and processed with a tanning agent extracted from olive tree leaves (a waste product of the olive harvest).

Leather Premium F is available in 22 colours.

Material	Semi-aniline nappa leather with a very soft and supple feel, vegetable tanned
Fastness to light	Type 5
Thickness	1,1–1,3 mm
Fastness to rubbing	Grade 4 dry and wet

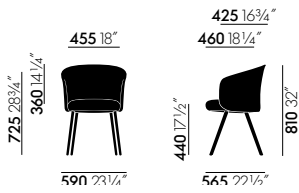
## Leather Premium F



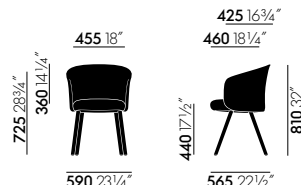


# Dimensions

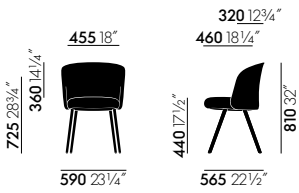
(in accordance with EN 1335-1:2000)



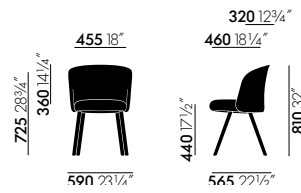
**Mikado Armchair,  
die-cast aluminium legs**



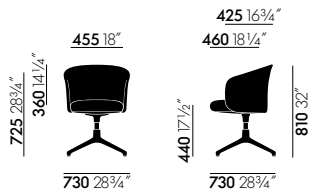
**Mikado Armchair,  
wooden legs**



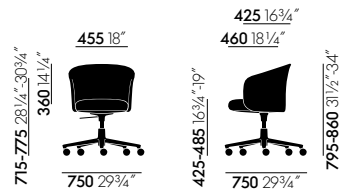
**Mikado Side Chair,  
die-cast aluminium legs**



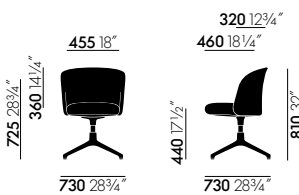
**Mikado Side Chair,  
wooden legs**



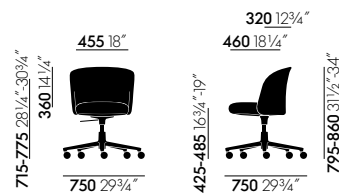
**Mikado Armchair,  
four-star base**



**Mikado Armchair,  
five-star base**



**Mikado Sidechair,  
four-star base**



**Mikado Sidechair,  
five-star base**

